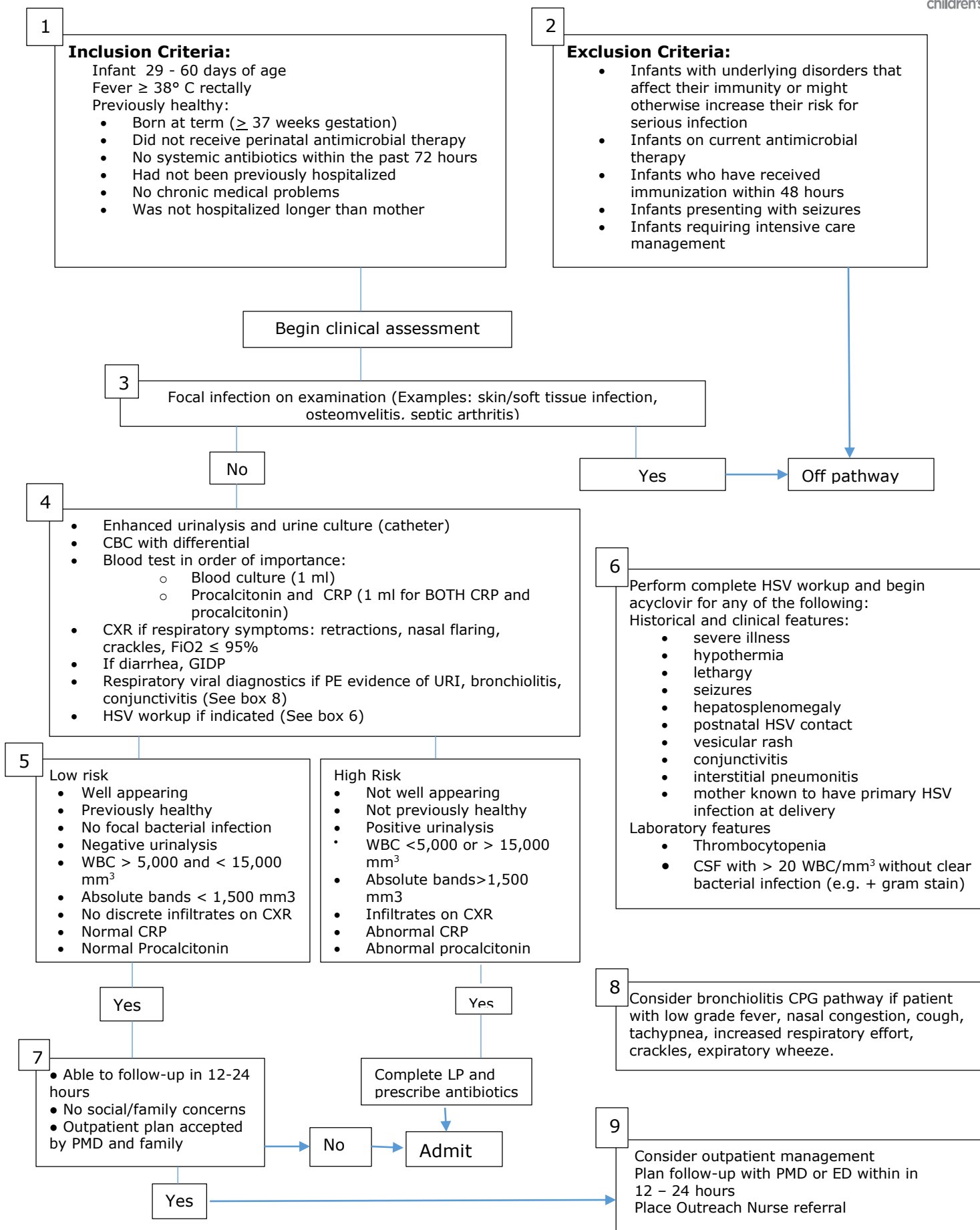




DAYTON CHILDREN'S HOSPITAL
CLINICAL PRACTICE GUIDELINES

DISCLAIMER: This Clinical Practice Guideline (CPG) generally describes a recommended course of treatment for patients with the identified health needs. This CPG is not presented and should not be used as a substitute for the advice of a licensed independent practitioner, as individual patients may require different treatments from those specified, and guidelines cannot address the unique needs of each patient. Dayton Children's shall not be liable for direct, indirect, special, incidental or consequential damages related to the use of this CPG.

ED Pathway for Evaluation/Treatment of Febrile Infants 29–60 Days



ED Pathway for Evaluation/Treatment of Febrile Infants

References

1. Byrington, C. et al. Costs and infant outcomes after implementation of a care process model for febrile infants. *Pediatrics* 2012;130:e16-e24.
2. Huppler, A. et al. Performance of low-risk criteria in the evaluation of young infants with fever: review of the literature. *Pediatrics* 2010;125:228-233.
3. Escobar, G. et al. Stratification of risk of early-onset sepsis in newborns \geq 34 weeks' gestation. *Pediatrics* 2014;133:30-36
4. Polin, R. et al. Management of neonates with suspected or proven early-onset bacterial sepsis. *Pediatrics* 2012;129:1006-1015.

